

Kroombit Tops

Kroombit Tops

Kroombit Tops, a spectacular plateau is 85km south-west of Gladstone. It is considered a temperate island in the subtropical zone where the Dawes and Calliope Ranges meet. With its combination of altitude, climate and geology, this 41,900ha reserve has unique biological, cultural and geological features.

Kroombit Creek and its tributaries drain much of the plateau. Kroombit, Dry and Calliope Creeks all flow west into the Fitzroy River. To the south, Munholme and Three Moon Creeks flow into the Burnett River via Cania Dam.

Landscape and vegetation

The Kroombit Tops plateau is 800m above sea level. It rises to about 930m at Amy's Peak and reaches a maximum altitude of about 940m on the ridge between Kroombit and Dry Creek valleys.

The plateau is defined by the escarpment on the east and northeast, and falls away to the west and south in a series of narrow ridges, steep-sided valleys and gorges.

The wide variety of vegetation is a reflection of the rugged topography and the varying soil types, climate, fire regime, and rainfall across the plateau from the south-east to the north-west.

Blackbutt communities dominate the higher wetter south-eastern sandstone country. Wet rainforest is also prominent in the south-east particularly in the Three Moon and Munholme Creeks. Open forests of Sydney blue gum and rough-barked apple are a feature of many of the eastern lower slopes and broad valley floors, while brown bloodwood and gum-topped ironbark occur on the skeletal soils on ridges and cliff lines. Other eucalypts common on the tableland are white mahogany and grey gum.

Extensive areas of dry rainforest occur along the western slopes. As you move west the wetter palm rainforest gives way to hoop pine dry rainforest. Further west again the hoop pine grades into a bottle tree community.

Tea tree grows along the creeks. Vegetation along the creeks is more diverse with rainforest elements that form a unique fringing rainforest community.

Heritage

The Bailai, Gooreng Gooreng, Gurang and Gangalu groups have traditional links to the area. Some evidence of Aboriginal occupation has been found, but the Aboriginal history of the land is poorly known by the wider community.

The area around Kroombit Tops was taken up for sheep grazing between 1854 and 1860 but it is likely that the Tops were not explored by Europeans until the discovery of gold in the surrounding area in the 1870s and 1880s.

An access road from the northern side of Kroombit was built between 1964 and 1968 to allow logging between 1969 and 1995.

Access

The main access to Kroombit Tops from the north via the Tableland Road is suitable for conventional vehicles. From Calliope follow the Dawson Highway south-west towards Biloela for 4km and turn left onto the Many Peaks Road. Follow this road for 1.5km then turn right onto Tableland Road. The park boundary is a further 50km along this road.

An alternative route exists via the Cedervale and Clewleys Gap roads from Ubobo. This road is rough and is only accessible by 4WD vehicles in good weather conditions.

All connecting roads and roads within the park are NOT sealed and become impassable in wet weather.

Things to see and do

- Take a 13km self-guiding drive from the Barracks to the Lookout — it is suitable for conventional vehicles.
- Drive the 4WD loop road through the western section of the park.
- Enjoy birdwatching for more than 140 recorded species.
- Bring a spotlight to explore at night.
- Go bush camping and walking.
- Pack a picnic lunch.

Bushwalking

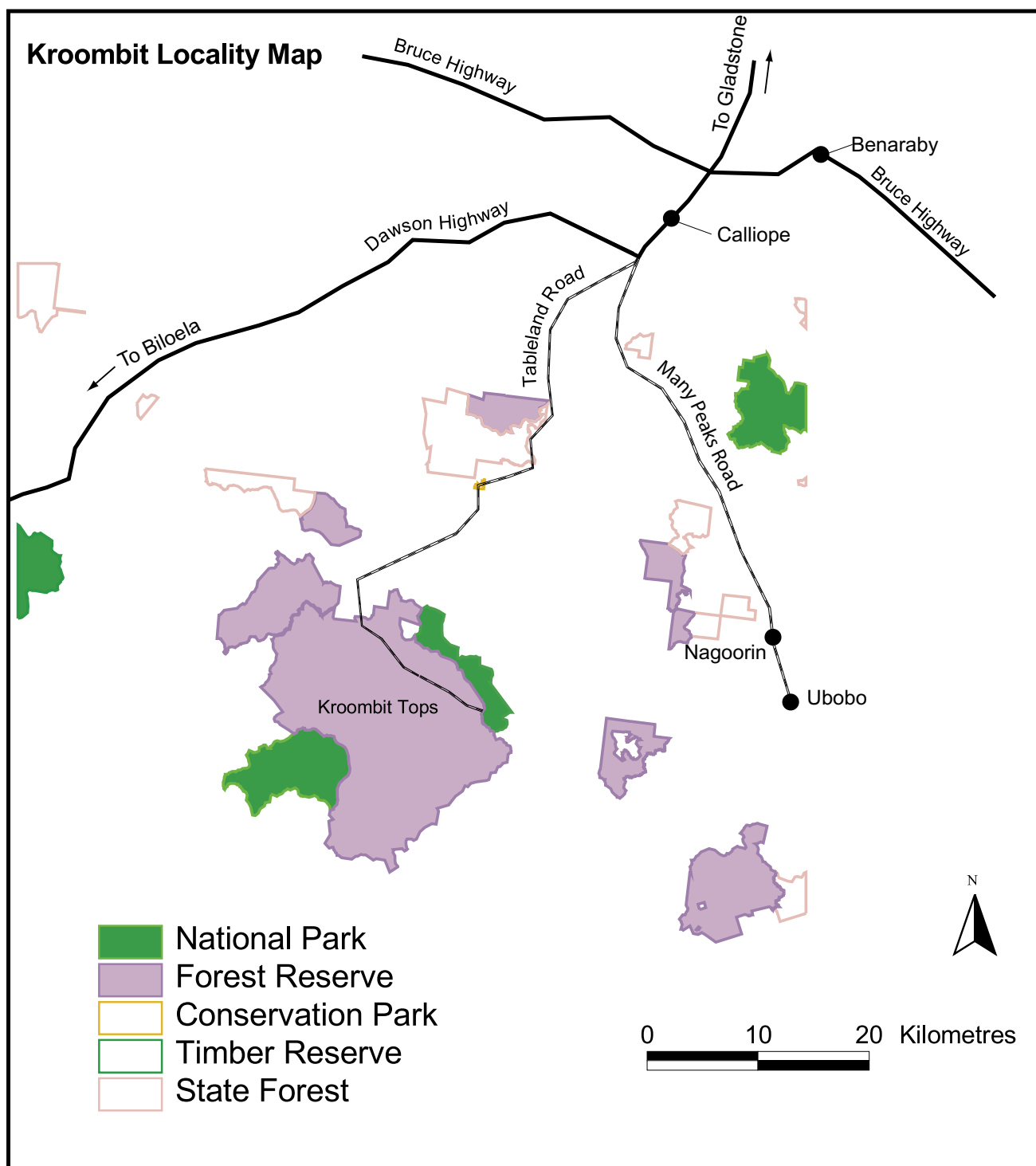
Kroombit Tops is remote and undeveloped and is only suitable for well-equipped, experienced bushwalkers. For walks beyond the fire trails, contact the Queensland Parks and Wildlife Service (QPWS) Ranger at Gladstone and complete the **Bushwalking registration form**.

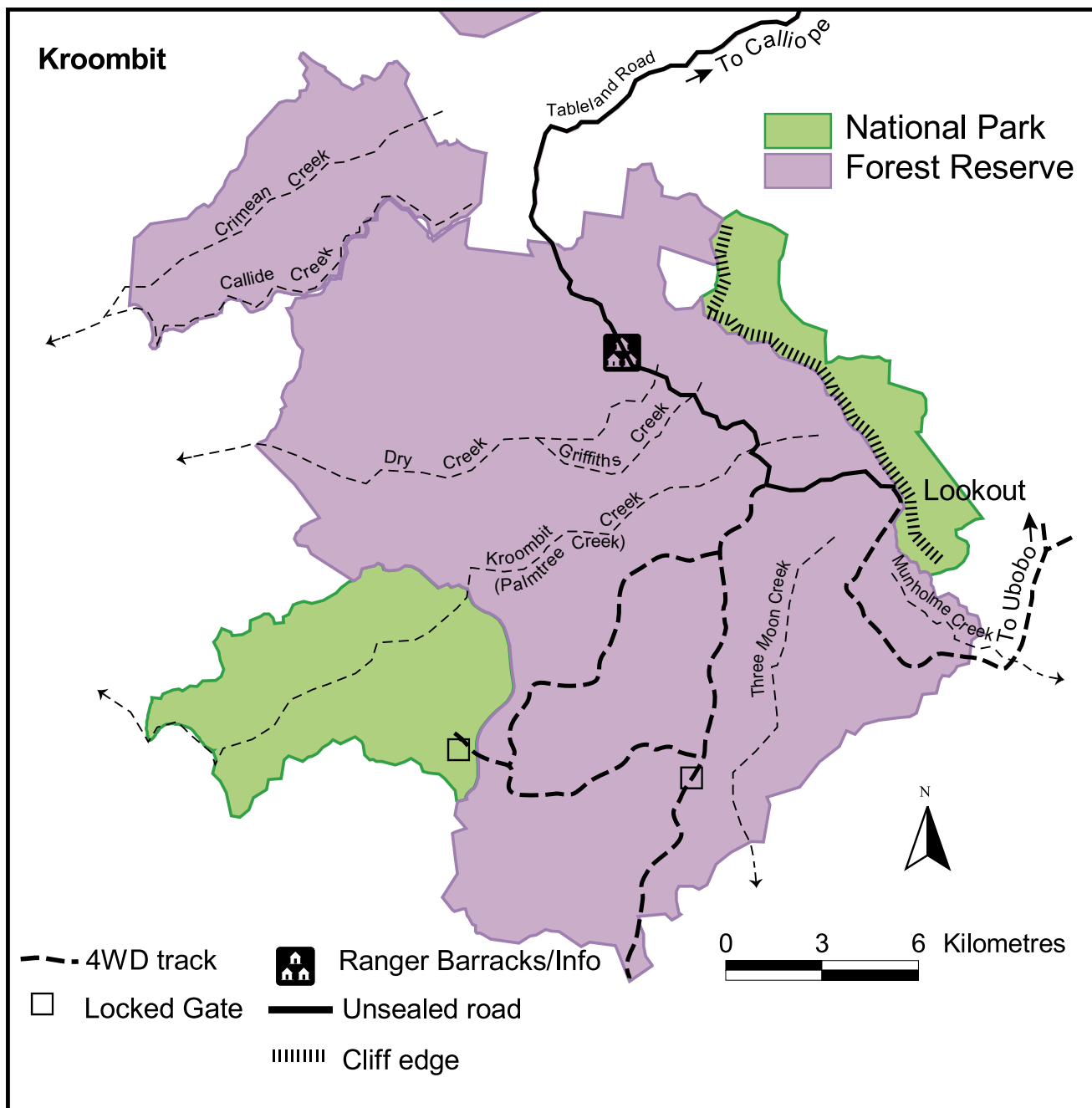
Carry water, food, a compass and a map. Notify an independent responsible person of your itinerary and successful return from your trip. Remember to tell them that you have returned safely.

Bush camping

Bush camping is permitted at Kroombit Tops. You can obtain camping permits from the QPWS office in Gladstone or Rockhampton. Camping fees apply.

Visitor facilities are not provided, so you must be self-sufficient and carry plenty of water. Please bring a shovel and be prepared to bury all toilet waste at least 30cm deep and 100m from campsites and waterways.





Caring for Kroombit Tops

Follow a few simple guidelines to make sure you enjoy the Park's natural beauty every time you visit.

- Leave Kroombit Tops as you find it — everything in the park, living or dead, is protected.
- Leave your pets at home — domestic animals are not permitted in the park because they disturb wildlife.
- Take all rubbish with you when you leave. Do not bury or burn your rubbish.
- Keep your camp area tidy at all times and leave your site as you find it.

- Bury all toilet waste at least 30cm deep and 100m from any waterways, tracks and campsites.
- Avoid feeding wildlife, as they can become sick or aggressive.
- Make sure fires are extinguished before leaving the park.
- Do not bring firearms or any other weapons onto the park.

National parks are protected areas under the *Nature Conservation Act 1992*. Penalties apply for breaches of this Act.



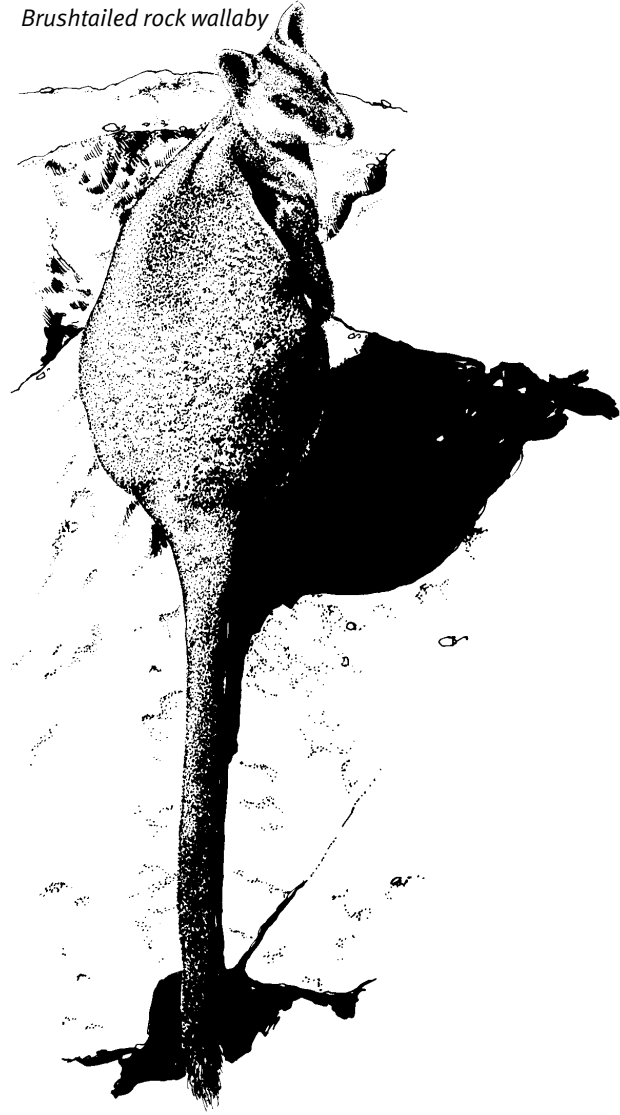
Yellow-tailed Black Cockatoo

Looking after yourself

- Be totally self-sufficient as no fuel, food or drinking water is available at the Park. The closest service stations are at Calliope, Biloela and Ubobo.
- Avoid attempting 4WD specified tracks in conventional vehicles.
- Take care near trees during severe storms and strong wind periods as timber may fall.
- Keep clear of cliff edges.
- Wear a wide brimmed hat, sunscreen and protective clothing to avoid sunburn.

- Carry plenty of water.
- Carry a first aid kit with you.
- Complete a **Bushwalking registration form** before extended walks.
- In an emergency use CDMA mobile phones at sign posted areas. Alternatively use UHF emergency channel 5, which is monitored by emergency authorities.

Brushtailed rock wallaby



For further information contact:

Environmental Protection Agency
Queensland Parks and Wildlife
Service

Centre Point Plaza,
Level 3/136 Goondoon Street,
PO Box 5065,
GLADSTONE QLD 4680
Phone: (07) 4971 6500
Fax: (07) 4972 1993

Environmental Protection Agency
Queensland Parks and Wildlife
Service

Cnr Yeppoon and Norman Roads
North Rockhampton QLD 4701
PO Box 3130, Rockhampton
Shopping Fair
ROCKHAMPTON QLD 4701
Phone: (07) 4936 0511
Fax: (07) 4936 2172

www.epa.qld.gov.au

© State of Queensland – Queensland Parks and
Wildlife Service

BP1487 June 2003

Recycled paper saves energy and resources.

